






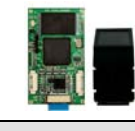




Product Composition




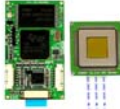


• FC2062A-Optical Sensor series

	FC2062A-FS10	FC2062A-FS11	FC2062A-FS20
			
SDK-E1 	FC20SDK-E1 (62A-FS10) *	FC20SDK-E1 (62A-FS11)	FC20SDK-E1 (62A-FS20)
SDK-E2 	FC20SDK-E2 (62A-FS10) *	FC20SDK-E2 (62A-FS11)	FC20SDK-E2 (62A-FS20)

• FC2055A1-Optical Sensor series

	FC2055A1-FS10	FC2055A1-FS11	FC2055A1-FS20
			
SDK-E1 	FC20SDK-E1 (55A1-FS10) *	FC20SDK-E1 (55A1-FS11)	FC20SDK-E1 (55A1-FS20)
SDK-E2 	FC20SDK-E2 (55A1-FS10) *	FC20SDK-E2 (55A1-FS11)	FC20SDK-E2 (55A1-FS20)

FC2055A1-Silicon Area Sensor series

	FC2055A1-TCS1	FC2055A1-TCS2	FC2055A1-MS1	FC2055A1-AS1
				
SDK-E1 	FC20SDK-E1 (55A1-TCS1)	FC20SDK-E1 (55A1-TCS2)	FC20SDK-E1 (55A1-MS1)	FC20SDK-E1 (55A1-AS1)
SDK-E2 	FC20SDK-E2 (55A1-TCS1)	FC20SDK-E2 (55A1-TCS2)	FC20SDK-E1 (55A1-MS1)	FC20SDK-E2 (55A1-AS1)

Note*) NOT RECOMMENDED for New Design

SDK-E1 & E2 Product Sheet

FC2062A and FC2055A1 Series

DIGENT
www.digent.com

- SDK CD (PC Demo Program, Document, EVK Board Schematic, EVK Source Code, Data Sheet, etc.)
- RS-232C Cable
- Indoor AC220V/DC5V SMPS AC/DC Adapter



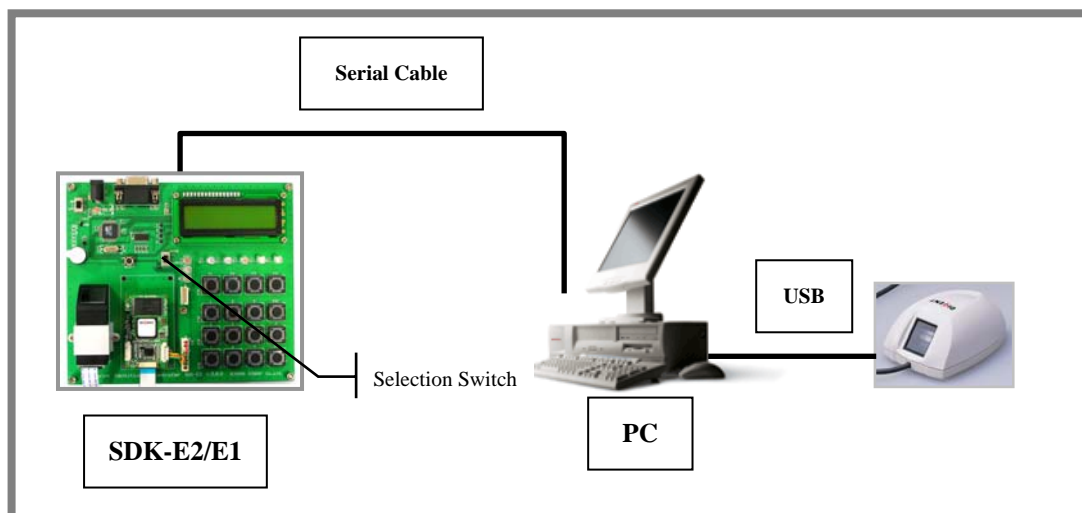
Function Description

- Fingerprint Enrollment
- 1:1 Matching(Fingerprint Verification)
Etc...
- 1:N Matching(Fingerprint Identification)
- Fingerprint Deletion (Only One Enrolled Fingerprint)

PC Demo Program

Connect the SDK-E1/2 board and PC with RS-232C serial cable.

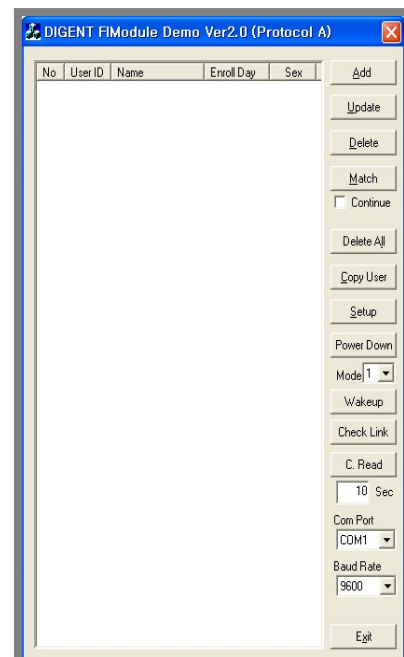
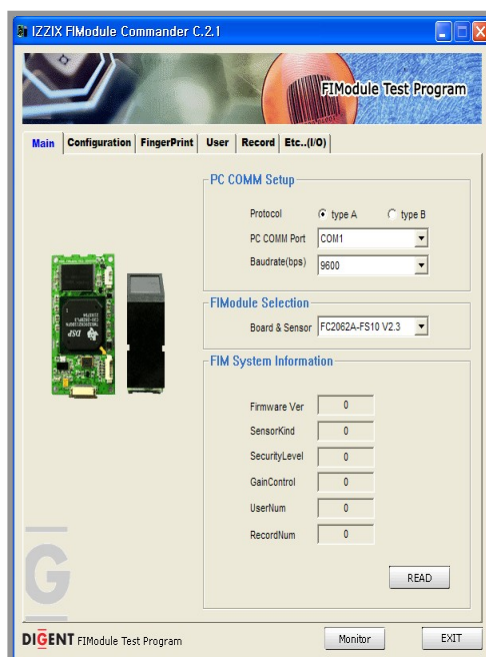
Install PC Demo Program (FIM_Test.exe, FIMdemoA.exe or FIMdemoB.exe) in the provided CD to PC.



**Note) In case of PC Demo(IZZIX FIModule Commander), FD1000 can be used for enrollment.
But, FD1000 can not be used in FC2055A1-AS1 FIModule.**

[Function Description]

- User Fingerprint Enrollment
- User Header Data Update
- User Data Deletion
- User Fingerprint Identification
- All User Data Deletion
- All User Data Copy
- FIModule System Data Setup
- FIModule Power-Down Setup
- Connection Status Test



This specification is subject to change without prior notice.

Rev2.1 August 31, 2006

DIGENT - Advanced Fingerprint Security Solution

E-mail : support@digent.co.kr